

# We're Bridging the **Gap** in Patient Care!



[About Us](#)

[Request a House Call](#)

[Resources](#)

[Testimonials](#)

[FAQ](#)

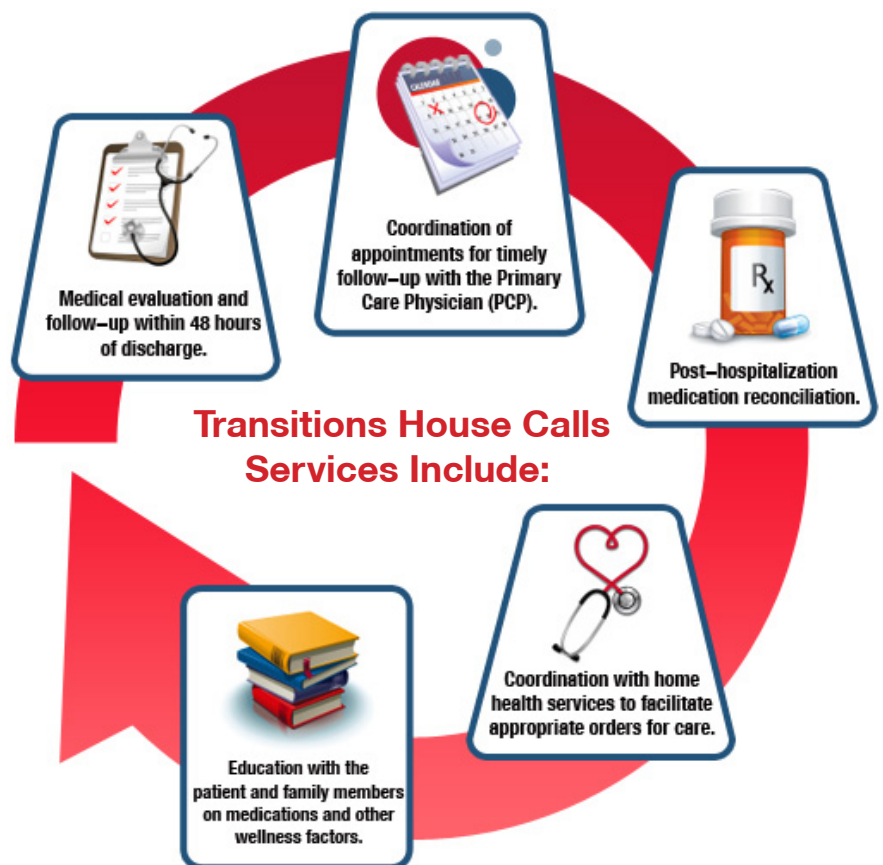


## Who Benefits?

The patient, PCP and the acute care facility by providing a teamwork approach through:

- Continuity of care, by assisting patient reconnect with their PCP in a timely manner
- Reducing emergency room visits and re-hospitalizations
- Improving outcomes by seeing the patient within 48 hours of discharge to ensure medical conditions remain stabilized
- Personalized quality and professional care in the home

Transitions House Calls is a team of medical professionals dedicated to providing a high-quality of healthcare services to patients in their home. Our goal is to improve communication and medical care between the patient and their Primary Care Physician (PCP).



We are NOT a replacement for your PCP; instead, we are an adjunct or extension of your PCP.

## About Us

Transitions House Calls opened in May 2010 and was initially developed to keep patients from using the emergency department as their primary care physician. Today it also encompasses caring for patients who are discharging from the hospital and find themselves in limbo until they see their PCP or cardiologist. In order to reduce unnecessary or preventable readmissions, we send a nurse practitioner to the home to follow or help medically manage the patient while waiting for the follow up appointment is kept with the PCP or cardiologist.

It seems simple and perhaps redundant, but the fact is, many patients are not adequately prepared for the return home; yet they aren't sick enough to remain in the hospital. The number one reason a patient may go back to the hospital is for medication reasons. The nurse practitioner has prescriptive authority, meaning they can write a prescription for or change an existing medication as needed. We work closely with hospitalists and many PCPs to keep them informed and share medical information about a patient's health status.

We are not a replacement for the PCP or cardiologist; however, we can continue to provide care in a patient's home if the PCP and/or cardiologist agree.

Currently, we are measuring 30-day readmissions and are reporting 6% for the second quarter of 2011; the national average is roughly 20%. We expect this number to remain at or under this benchmark and will update the website at the end of 2011.

We have grown since May of 2010 and now have eight nurse practitioners and cover the entire DFW Metroplex and many surrounding communities. Here are their bios and a photo:



**KELLY SHEA** – Acute Care Nurse Practitioner since 1997 with a total of 14 years experience in cardiology (including both as a RN and a NP); including open heart/heart and lung transplant ICU at Baylor Dallas; Heart Place Cardiology group following inpatients and outpatients; CHF follow-up patients, post-intervention patients. She graduated in 1992 and received her MSN in 1997, both from UT Arlington. Kelly has been working in the housecalls specialty since 2009 and also serves as an honorary faculty member at UT Arlington School of Nursing. Kelly covers the H-E-B, Watauga, Colleyville, Southlake, Keller, and Grapevine areas in northern Tarrant County.



**NICOLE SHUTTS** – Has been a Nurse Practitioner since 2002 with experience in Oncology, Palliative Care, and Geriatric Medicine. Her passion for working with adult population was personified when she relocated from Missouri to Texas to work in the housecalls specialty in 2010. Nicole covers the greater east Dallas, Allen, Richardson, Garland, Rowlett, Rockwall, and Mesquite areas.



**HEATHER HSU** – Is a Family Nurse Practitioner who completed her undergraduate and graduate work from Baylor University in 2006. Heather's experience includes, medical surgical ICU at Baylor downtown, family medicine, nursing home, rehabilitative care, home care, along with geriatric care. Heather joined the housecalls specialty in 2010 and covers the N. Dallas, HP/UP, Carrollton, Coppell, Plano, The Colony, Allen, Frisco and McKinney areas.



**MARGARET KOHN** – Family Nurse Practitioner since 2003. Her nursing experience is in Medical/Surgical where she was charge nurse on a busy unit at Virginia Baptist Hospital Lynchburg, VA. The variety of disease processes managed has been invaluable for her and has contributed to her overall treatment philosophies. Margaret has been working in the Housecalls specialty since 2006. She covers the greater Fort Worth area including Benbrook, Lake Worth, Azle and Weatherford areas.



**KIM NELSON** – Adult Nurse Practitioner who received her Master's of Science in Nursing and Bachelor's degrees from UTA in Arlington. She has been practicing in the DFW area with a clinical focus on the geriatric population since 1996. Her experience includes internal medicine offices, nursing homes, assisted living facilities and private residences. Her clinical focus incorporates a holistic view of the patient, and her goal is to individualize each patient's plan of care, medications, and goals of treatments for their specific needs and situation. Kim covers the Arlington, Kennedale, and Mansfield areas.



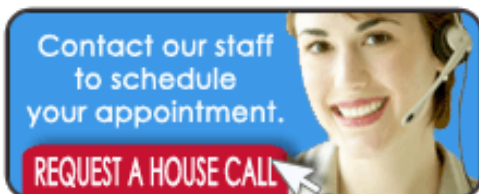
**TRACY COOK** – Adult Nurse Practitioner since 2006. She has over 20 years of nursing experience, 18 of which have been in the home health environment. She began working in the housecalls specialty in 2006. Tracy covers the greater Denton County as well as Lewisville, and Flower Mound areas.



**DEBRA FOLDOE** – Debra has practiced nursing in the DFW area since 2000 and is a graduate of UT Arlington for both undergraduate and advanced practice degrees. Her experience includes inpatient and outpatient settings as well as within the health insurance industry. Her nursing expertise includes wound care, diabetes, CHF, COPD, GI, urology, post-surgical care, and acute and chronic family care. Debra covers the E. Fort Worth, N. Arlington, Grand Prairie, Irving, Las Colinas, and west Dallas areas.



**SHAUNA McCARTHY** – Adult Nurse Practitioner since 2008. She received her Master's of Science in Nursing and Bachelor's degrees from Marian University, Wisconsin. Shauna has 21yrs of nursing experience in Internal Medicine, ICU, Cath Lab, Homecare and Nursing Home, including Nurse Director and Educator. Shauna covers the Duncanville, Lancaster, Cedar Hill, Red Oak, DeSoto, Midlothian, Waxahachie, and Cleburne areas.

[About Us](#)[Request a House Call](#)[Resources](#)[Testimonials](#)[FAQ](#)

### Online Contact Form:

For inquiries, please fill out this online form and a representative will get in touch with you.

How would you prefer us to contact you?

Your Name:

City:

Email Address:

Phone Number:

between  :   and  :

Comments: